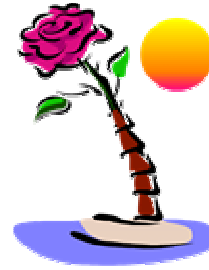


I'm A Believer

Music by: Smash Mouth, CD Soundtrack Shrek, 2001
 Speed: 40 bars (= basics) per minute
 Choreo by: Bernd Flühr
 Clog Convention 2008, berndfluehr@web.de



level: Basic
 time: 3:14

Sequence: **Intro A B A B C B* End**

Wait 8 beats

Intro: 0:09

4 Basic	DS RS	DS RS	DS RS	DS RS
	L RL	R LR	L RL	R LR
	&1 &2	&1 &2	&1 &2	&1 &2

A: 0:15

2 Triple	DS DS DS RS	DS DS DS RS
	L R L RL	R L R LR
	&1 &2 &3 &4	&1 &2 &3 &4
2 Push Off	DS RS RS RS	
	L RL RL RL	move left
	R LR LR LR	move right
	&1 &2 &3 &4	
2 Triple	DS DS DS RS	
forward	L R L RL	move forward
and back	R L R LR	move backwards
	&1 &2 &3 &4	
2 Push Turn	DS RS RS RS	
	L RL RL RL	turn 1/2 Left
	R LR LR LR	turn 1/2 Right
	&1 &2 &3 &4	

B: 0:38

Triple Brush	DS DS DS Br Up/H			
	L R L R R L	move forward		
	&1 &2 &3 & 4			
Triple	DS DS DS RS			
back	R L R LR	move backwards		
	&1 &2 &3 &4			
REPEAT Triple Brush, Triple				
2 Basic	DS RS	DS RS		
	L RL	R LR		
	&1 &2	&1 &2		
2 Basic Brush	DS BR UP/H			
	L R R L			
	R L L R			
	&1 & 2			
4 Toe-Heel	T H	T H	T H	T H
	L L	R R	L L	R R
	& 1	& 2	& 3	& 4

A: 0:59 -----
2 Triple, 2 Push Off, 2 Triple (forward and backwards), 2 Push Turn

B: 1:23 -----
Triple Brush, Triple back, REPEAT, 2 Basic, 2 Basic Brush, 4 Toe-Heel

C: 1:44 -----

4 Triple DS DS DS RS
left L R L RL **move left**
and right R L R LR **move right**
&1 &2 &3 &4

4 Basic DS RS
turn 1/4L L RL **turn 1/4 left on RS**
R LR **turn 1/4 left on RS**
&1 &2

2 Push Turn DS RS RS RS
L RL RL RL **turn 1/2 left**
R LR LR LR **turn 1/2 right**
&1 &2 &3 &4

B*: 2:08 -----
Triple Brush, Triple back, REPEAT, 2 Basic, 2 Basic Brush

8 Toe-Heel T H **full turn left**
L L
R R
& 1

End: 2:31-----

Triple Brush DS DS DS Br Up/H **move diagonally forward to the left**
L R L R R L
&1 &2 &3 & 4

Triple DS DS DS RS
back R L R LR **move backwards**
&1 &2 &3 &4

REPEAT Triple Brush (diagonally to the right), Triple

4 Steps S S S S **turn 1/2 left**
L R L R
1 2 3 4

Push Off DS RS RS RS
L RL RL RL **move left**
&1 &2 &3 &4

Push Turn DS RS RS RS
R LR LR LR **turn 1/2 right**
&1 &2 &3 &4

REPEAT Push Off, Push Turn
REPEAT Push Off, Push Turn